

# Demographics analytics

Carole Gabay – source : COVerAGE-DB [https://osf.io/mpwjg/?view\\_only=](https://osf.io/mpwjg/?view_only=)  
[Data ending 6/23/2022](#)

## Solidarité Covid *Français de Chine*



Une initiative de l'Union des Français de l'Étranger - Shanghai

Our data security partner



Please Support our work

Solidarité Covid - Français de Chine



Scan with WeChat and share

Until August 22 2022

# Share of elderly in cases vs Pop- Lethality rates

2 explanations : nursing home clusters & Priority of testing for severe cases in the spring of 2020

UK : low average age of deaths

## Europe – North America

Sociology of Covid + cases by country - ranked on Share of <50 Y in cases				sources : INED - COVERAGE-DB + desk research							8/1/2022					
Carole Gabay				share in C+ cases by age group			avg age cases	United Nations share of 70+ in demographics - source UN	share in Deaths by age group			avg age Deaths	Lethality		Worldometer	
Area	Country	<50	50-70	70+		<50	50-70	70+		Lethality of 50-70	Lethality of 70+	share of males in deaths	COVERAGE data updated	nb deaths 1M Pop	nb cases 1M Pop	
Northern Europe	Iceland	79%	17%	4%	35.0	11%	3%	17%	80%	80.2	0%	4%	12/16/21	518	584,531	
Northern Europe	Denmark	76%	21%	7%	35.1	15%	0%	0%	0%	81.7			6/22/22	1,143	524,972	
Northern Europe	Northern Ireland	76%	17%	6%	35.8	10%	2%	16%	82%	80.6	0%	7%	5/23/22	1,512	325,422	
Northern Europe	Faroe Islands	75%	19%	6%	35.7	#REF!	0%	0%	0%				7/3/21	#REF!	#REF!	
Northern Europe	Scotland	75%	21%	6%	35.9	14%	3%	17%	80%	79.5	1%	8%	6/2/22	#REF!	#REF!	
Northern Europe	Sweden	71%	23%	6%	39.8	15%	2%	10%	89%	82.8	0%	14%	1/13/22	1,889	248,259	
Western Europe	France	70%	19%	9%	35.5	15%	1%	12%	86%	81.0	0%	5%	6/30/22	2,321	516,471	
Western Europe	Belgium	69%	20%	9%	39.1	14%	1%	14%	85%	86.4	1%	7%	6/20/22	2,759	378,403	
Western Europe	Switzerland	69%	19%	6%	40.6	14%	1%	10%	89%	84.3	0%	7%	5/25/22	1,599	447,369	
Eastern Europe	Slovakia	69%	22%	6%	39.8	11%	0%	0%	0%	74.1			6/19/22	3,701	332,639	
North America	USA	68%	21%	9%	39.2	11%	0%	0%	0%	73.9			6/9/22	0	0	
Northern Europe	Netherlands	68%	21%	6%	38.3	14%	0%	0%	0%	82.2			6/22/22	1,307	484,421	
Western Europe	Austria	68%	22%	7%	38.9	14%	1%	14%	84%	81.4	0%	5%	6/21/22	2,098	521,080	
Southern Europe	Spain	68%	21%	11%	40.3	15%	2%	14%	84%	82.3	1%	6%	6/13/22	2,366	282,665	
Northern Europe	Estonia	67%	24%	9%	40.6	14%	0%	0%	0%				12/27/21	1,972	441,265	
Eastern Europe	Czechia	67%	22%	8%	40.5	14%	2%	18%	80%	77.8	1%	10%	6/21/22	3,765	370,694	
Western Europe	Germany	66%	22%	7%	39.2	16%	2%	13%	85%	81.5	0%	6%	6/21/22	1,709	367,046	
North America	Canada	66%	22%	12%		12%	1%	10%	88%		1%	19%	2/19/21	1,134	104,407	
Southern Europe	Slovenia	66%	23%	8%	41.4	14%	0%	0%	0%	81.8			6/21/22	3,222	521,108	
Southern Europe	Croatia	65%	24%	9%	41.6	15%	0%	0%	0%				6/20/22	4,028	292,839	
Southern Europe	Greece	65%	20%	8%	42.8	17%	3%	21%	75%	80.8	1%	7%	6/19/22	3,005	421,565	
Southern Europe	Portugal	64%	21%	9%	42.4	17%	1%	13%	86%	83.1	1%	8%	1/22/22	2,430	527,397	
Southern Europe	Montenegro	63%	27%	10%	43.3	10%	0%	0%	0%				6/20/22	4,374	413,816	
Northern Europe	Latvia	62%	23%	7%	41.6	14%	4%	24%	72%	76.0	0%	4%	6/1/22	3,199	469,003	
Southern Europe	Italy	59%	25%	11%	43.4	17%	1%	14%	85%	80.9	1%	7%	6/21/22	2,857	349,379	
Northern Europe	Isle of Man	58%	29%	13%	50.7		0%	0%	0%				3/1/21	1,326	438,489	
Southern Europe	Albania	56%	32%	12%		10%	8%	44%	48%		3%	8%	12/2/20	1,236	108,793	
Eastern Europe	Romania	55%	30%	13%	48.3	13%	0%	0%	0%				1/24/22	3,480	161,764	
Northern Europe	Ireland	53%	25%	22%		10%	2%	10%	88%		2%	22%	5/24/20	1,512	325,422	
Eastern Europe	Moldova	49%	33%	8%	46.8	7%	5%	44%	50%	68.6	3%	14%	6/7/22	2,892	132,567	
Eastern Europe	Bulgaria	48%	33%	15%	50.0	15%	0%	0%	0%	72.0			6/21/22	5,469	176,872	
Eastern Europe	Ukraine	#DIV/0!	0%	0%		11%	6%	40%	54%	70.0			2/1/22	2,517	116,322	
Northern Europe	England	#DIV/0!	20%	7%	36.3	14%	3%	16%	81%	78.8	1%	10%	6/16/22	2,680	339,582	
Northern Europe	Norway	#DIV/0!	12%	3%	30.6	12%	0%	0%	0%	81.2			6/19/22	658	264,286	
Eastern Europe	Hungary	#DIV/0!	0%	0%		13%	4%	29%	67%	74.3			6/15/22	4,869	204,537	
Northern Europe	United Kingdom	#DIV/0!	0%	0%		14%	2%	15%	83%	81.0			7/23/21	2,680	339,582	

# Monthly share of elderly in new cases

## Europe – North America

		Solidarity Covid - Exgats in China									share of 70Y+ in the new cases				avg age of cases		
area	country	202111	202112	202201	202202	202203	202204	202205	202206	demographics data update	2021	Q1 2022	Q2 2022				
Southern Europe	Malta									NA							
Southern Europe	Portugal	13%		5%						1/22/22	42.6	39.4					
Northern Europe	Iceland	2%	2%							12/16/21	35.0						
Southern Europe	Italy	12%	8%	7%	8%	11%	13%	16%	15%	6/21/22	44.8	40.5	40.9				
North America	Canada									2/19/21							
Northern Europe	Denmark	7%	3%	3%	8%	14%		7%	18%	6/22/22	35.1	34.1	36.2				
Western Europe	France	9%	6%	4%	9%	12%	16%	16%	16%	6/30/22		35.4					
Northern Europe	Sweden	6%	4%	4%						1/13/22	39.9	39.3					
Northern Europe	Ireland									5/24/20							
Western Europe	Belgium	7%	5%	4%	10%	14%	13%	17%	16%	6/20/22	39.7	37.2	38.4				
Northern Europe	UK									1-Jun							
Northern Europe	Finland									6/22/22							
Western Europe	Germany	8%	7%	3%	5%	7%	8%	8%	7%	6/21/22	40.2	36.7	37.2				
Northern Europe	Norway					3%	15%	21%	24%	6/19/22	31.8	29.7	30.1				
Western Europe	Luxembourg									NA							
Northern Europe	Netherlands	10%	7%	2%	3%	9%	11%	11%	11%	6/22/22	39.3	36.0	36.9				
Southern Europe	Spain	10%	4%	7%	11%	15%	30%	31%	33%	6/13/22	40.7	39.0	40.1				
Western Europe	Austria	6%	3%	3%	5%	8%	11%	12%	10%	6/21/22	39.6	37.3	37.9				
Southern Europe	Greece			6%	8%	9%	10%	11%	10%	6/19/22	45.7	36.9	37.6				
Western Europe	Switzerland	7%	5%	3%	3%					5/25/22	42.2	37.0	36.7				
North America	USA	9%	7%	6%	8%	8%	11%	10%	12%	6/9/22	39.7	38.3	38.3				
Eastern Europe	Hungary									6/15/22							
Eastern Europe	Czechia	6%	6%	3%	6%	11%	17%	20%	20%	6/21/22	41.0	39.2	39.5				
Northern Europe	Lithuania									NA							
Northern Europe	Latvia	10%	9%	4%	4%	6%	10%		13%	6/1/22	42.9	38.2	37.6				
Northern Europe	Estonia	9%	7%							12/27/21	40.5						
Southern Europe	Cyprus									NA							
Eastern Europe	Poland									NA							
Southern Europe	Slovenia	7%	5%	4%	6%	8%	12%	13%	12%	6/21/22	42.4	39.2	39.6				
Eastern Europe	Belarus									NA							
Eastern Europe	Slovakia	6%	6%	3%	3%	6%	9%	16%	19%	6/19/22	40.4	38.3	38.4				
Southern Europe	Croatia	8%	9%	5%	8%	10%	13%	15%	13%	6/20/22	42.0	40.5	40.6				
North America	Belize									NA							
Southern Europe	Montenegro	11%	8%	9%	12%	15%	15%	18%	13%	6/20/22	43.3	43.3	43.5				
Southern Europe	Albania									12/2/20							
Eastern Europe	Serbia									NA							
Southern Europe	North Macedonia									NA							
Eastern Europe	Romania	17%		8%						1/24/22	48.5	46.5					
Eastern Europe	Ukraine									2/1/22							
Eastern Europe	Bulgaria	17%	17%	8%	14%	17%	25%	28%	24%	6/21/22	50.7	48.5	48.6				
Southern Europe	Bosnia and Her									NA							
Eastern Europe	Russia									NA							
Eastern Europe	Moldova			4%	13%	11%		22%	22%	6/7/22	48.4	42.6	43.7				
Western Europe	Channel Island									NA							
Northern Europe	Greenland									NA							
Southern Europe	Gibraltar									NA							
Northern Europe	Isle of Man									3/1/21	50.7						
Southern Europe	Vatican City									NA							
Western Europe	Monaco									NA							
Southern Europe	San Marino									NA							

# Evolution of lethality rate through variants on 70 Y + population

- High bias of the testing level

Europe – North America

	countries ranked on share of elderly in total cases											avg age of deaths		
	source COVerAGE-DB + extra input (France, Hong Kong, Brazil)											2021	Q1 2022	Q2 2022
70 Year + Lethality rate on 3 months rolling total	202012	202103	202106	202109	202112	202201	202202	202203	202204	202205	202206			
Eastern E Bulgaria	0.0%	0.0%	0.0%	0.0%	0.0%	49.8%	48.2%	48.8%	8.0%	8.0%	6.1%	0.0	72.0	72.2
Eastern E Moldova	9.5%	8.7%	0.0%	0.0%	0.0%	39.4%	22.0%	14.3%	3.0%	2.1%	17.3%	68.0	69.6	69.8
Northern Ireland	0.0%	0.0%	0.0%	0.0%	0.0%	0.0%	0.0%	0.0%	0.0%	0.0%	0.0%	0.0	0.0	0.0
Eastern E Romania	0.0%	0.0%	0.0%	0.0%	0.0%	0.0%	0.0%	0.0%	0.0%	0.0%	0.0%	0.0	0.0	0.0
Southern Albania	7.6%	0.0%	0.0%	0.0%	0.0%	0.0%	0.0%	0.0%	0.0%	0.0%	0.0%	0.0	0.0	0.0
Northern Isle of Man	0.0%	0.0%	0.0%	0.0%	0.0%	0.0%	0.0%	0.0%	0.0%	0.0%	0.0%	0.0	0.0	0.0
Southern Italy	10.8%	14.0%	18.9%	8.3%	5.0%	2.6%	3.1%	2.7%	2.4%	1.7%	1.4%	81.1	81.1	81.2
Northern Latvia	0.0%	0.0%	11.2%	7.8%	12.9%	14.8%	5.4%	3.4%	2.7%	2.9%	4.2%	75.9	76.2	76.5
Southern Montenegro	0.0%	0.0%	0.0%	0.0%	0.0%	0.0%	0.0%	0.0%	0.0%	0.0%	0.0%	0.0	0.0	0.0
Southern Portugal	8.9%	13.4%	4.0%	5.7%	5.4%	1.9%	1.9%	1.9%	0.0%	0.0%	0.0%	83.2	83.0	0.0
Southern Greece	20.1%	15.0%	18.8%	0.0%	0.0%	9.0%	8.2%	6.4%	3.4%	2.8%	2.9%	81.2	80.2	80.6
Southern Croatia	0.0%	0.0%	0.0%	0.0%	0.0%	0.0%	0.0%	0.0%	0.0%	0.0%	0.0%	0.0	0.0	0.0
Southern Slovenia	14.0%	12.3%	11.3%	6.7%	5.9%	32.7%	26.3%	23.1%	4.6%	4.1%	3.6%	81.8	81.6	81.6
North Am Canada	0.0%	14.6%	0.0%	0.0%	0.0%	0.0%	0.0%	0.0%	0.0%	0.0%	0.0%	0.0	0.0	0.0
Western Germany	16.0%	15.8%	11.0%	10.2%	6.5%	6.9%	4.1%	2.6%	1.6%	1.3%	1.0%	81.7	81.5	81.6
Eastern E Czechia	0.0%	0.0%	0.0%	0.0%	0.0%	48.5%	45.3%	40.8%	3.3%	2.9%	2.7%	77.7	77.9	78.0
Northern Estonia	0.0%	0.0%	0.0%	0.0%	0.0%	0.0%	0.0%	0.0%	0.0%	0.0%	0.0%	0.0	0.0	0.0
Southern Spain	11.0%	12.2%	9.4%	6.0%	2.7%	2.2%	2.5%	2.5%	2.2%	1.3%	1.1%	82.4	82.4	82.4
Western Austria	11.6%	13.3%	13.9%	5.8%	5.6%	10.8%	6.6%	3.2%	1.3%	1.3%	1.5%	81.5	81.3	81.4
Northern Netherlands	0.0%	29.9%	0.0%	0.0%	16.8%	0.0%	0.0%	0.0%	0.0%	0.0%	0.0%	82.3	0.0	0.0
North Am USA	13.6%	48.3%	0.0%	16.2%	0.6%	0.0%	0.0%	0.0%	47.5%	61.3%	89.6%	75.2	74.0	74.0
Eastern E Slovakia	13.0%	30.4%	32.0%	7.7%	7.2%	52.5%	45.2%	37.8%	4.1%	4.1%	3.2%	74.1	74.2	74.4
Western Switzerland	8.8%	14.3%	11.6%	5.7%	3.6%	2.7%	2.2%	1.7%	1.1%	0.0%	0.0%	84.4	84.2	84.2
Western Belgium	10.9%	11.5%	11.5%	4.4%	3.5%	2.5%	2.4%	1.6%	1.6%	1.3%	1.4%	86.5	86.2	86.2
Western France	6.3%	12.4%	14.6%	10.9%	5.2%	2.1%	2.1%	1.5%	1.2%	1.0%	0.9%	81.2	81.1	0.0
Northern Sweden	10.1%	18.2%	8.8%	7.1%	6.1%	2.4%	1.9%	1.6%	0.0%	0.0%	0.0%	82.9	82.7	0.0
Northern Scotland	18.2%	25.1%	5.8%	5.3%	6.5%	3.8%	2.7%	2.4%	2.9%	3.2%	4.5%	79.6	79.6	79.6
Northern Faroe Islands	0.0%	0.0%	0.0%	0.0%	0.0%	0.0%	0.0%	0.0%	0.0%	0.0%	0.0%	0.0	0.0	0.0
Northern Northern Ireland	9.4%	13.7%	9.4%	5.0%	6.2%	3.9%	2.5%	2.0%	2.2%	2.4%	3.1%	80.7	80.4	80.5
Northern Denmark	5.9%	5.3%	3.4%	0.0%	14.7%	0.3%	3.4%	2.4%	6.8%	1.9%	2.4%	81.8	81.5	81.5
Northern Iceland	0.0%	7.4%	0.0%	0.5%	1.4%	1.4%	2.9%	0.0%	0.0%	0.0%	0.0%	80.2	0.0	0.0
Eastern E Central African Republic	0.0%	0.0%	0.0%	0.0%	0.0%	0.0%	0.0%	0.0%	0.0%	0.0%	0.0%	0.0	0.0	0.0
Northern England and Wales	0.0%	0.0%	0.0%	0.0%	0.0%	0.0%	0.0%	0.0%	0.0%	0.0%	0.0%	80.7	0.0	0.0
Northern United Kingdom	0.0%	0.0%	0.0%	0.0%	0.0%	0.0%	0.0%	0.0%	0.0%	0.0%	0.0%	77.2	0.0	0.0
Northern England	0.0%	0.0%	0.0%	0.0%	0.0%	4.5%	4.5%	4.1%	3.4%	3.5%	5.1%	78.3	79.8	80.0
Northern UK	0.0%	0.0%	0.0%	0.0%	0.0%	0.0%	0.0%	0.0%	0.0%	0.0%	0.0%	0.0	0.0	0.0
Northern Finland	0.0%	0.0%	0.0%	0.0%	0.0%	0.0%	0.0%	0.0%	0.0%	0.0%	0.0%	81.4	81.5	82.4
Eastern E Hungary	0.0%	0.0%	0.0%	0.0%	0.0%	0.0%	0.0%	0.0%	0.0%	0.0%	0.0%	74.3	74.3	74.5
North Am New York USA	0.0%	0.0%	0.0%	0.0%	0.0%	0.0%	0.0%	0.0%	0.0%	0.0%	0.0%	0.0	0.0	0.0

In APAC, share of elderly in cases is usually aligned with share of elderly in Population. Share of 50-70 in deaths high in poorer countries and average age of death can be low

Middle East -Asia - Pacific

Sociology of Covid + cases by country - ranked on Share of <50 Y in cases				sources : INED - COVERAGE-DB + desk research										8/1/2022		
Carole Gabay		share in C+ cases by age group			avg age cases	United Nations share of 70+ in demographics - source UN	share in Deaths by age group			avg age Deaths	Lethality		share of males in deaths	COVERAGE data updated	nb deaths 1M Pop	nb cases 1M Pop
Area	Country	<50	50-70	70+			<50	50-70	70+		Lethality of 50-70	Lethality of 70+				
Southern Asia	Nepal	93%	6%	1%	29.8	4%	24%	39%	37%	62.3	8%	86%	70%	1/26/21	396	32,662
SouthEastern Asia	Cambodia	89%	9%	2%	34.1	3%	0%	0%	0%					3/25/21	178	7,955
Southern Asia	Maldives	86%	12%	2%	31.6	2%	0%	0%	0%					11/9/21	548	329,244
SouthEastern Asia	Vietnam	84%	14%	2%	35.9	5%	0%	0%	0%					6/6/21	435	108,725
SouthEastern Asia	Thailand	83%	15%	2%	35.5	8%	0%	0%	0%					6/28/21	448	65,451
Southern Asia	Bangladesh	82%	15%	3%	36.4	4%	31%	48%	21%	56.9	6%	12%		1/17/22	174	11,931
Southern Asia	Kazakhstan	81%	16%	3%	35.0	5%	0%	0%	0%					6/1/21	710	70,289
Western Asia	Israel	81%	14%	5%	31.7	8%	3%	21%	7%	79.5	1%	12%	57%	4/18/21	23	2,950
Southern Asia	Kyrgyzstan	79%	14%	7%		3%	0%	0%	0%					9/26/20	443	29,836
Western Asia	Palestine	78%	16%	4%	34.5	2%	0%	0%	0%					2/4/22	1,004	111,824
Oceania	Australia	78%	17%	5%	35.0	11%	3%	14%	82%	80.7	0%	5%	58%	4/12/22	454	361,508
SouthEastern Asia	Papua New Guinea	77%	22%	2%	39.1	2%	0%	0%	0%					3/14/21	71	4,816
Southern Asia	India	75%	21%	4%		4%	21%	52%	27%		4%	11%	69%	10/2/20	374	31,281
SouthEastern Asia	Indonesia	74%	20%	4%	38.1	4%	24%	53%	23%	59.1	7%	13%		4/10/22	562	22,218
SouthEastern Asia	Philippines	73%	20%	6%	38.6	3%	0%	0%	0%	63.0				6/11/22	539	33,568
Western Asia	Iraq	73%	22%	5%		2%	21%	50%	29%		8%	20%	69%	5/24/20	601	58,099
Southern Asia	Pakistan	73%	23%	4%		3%	21%	55%	24%		5%	12%	74%	6/2/20	133	6,768
Southern Asia	Afghanistan	71%	22%	7%	40.5	2%	19%	50%	31%	62.3	7%	13%		5/12/22	190	4,563
Western Asia	Turkey	70%	23%	7%		6%	6%	36%	58%		8%	44%	62%	10/26/20	1,152	184,279
SouthEastern Asia	Singapore locally a	67%	21%	12%		7%	0%	25%	7%		0%	2%		6/28/21	253	289,065
Western Asia	Lebanon	67%	25%	8%	41.3	5%	0%	0%	0%					6/23/21	1,558	173,842
Eastern Asia	South Korea	62%	0%	0%	41.1	11%	2%	16%	82%	78.8				6/22/22	488	388,086
Eastern Asia	Hong Kong locally a	53%	32%	12%		12%	1%	11%	88%		0%	5%		7/27/22	1,247	178,169
Eastern Asia	Japan	52%	15%	7%	35.4	22%	2%	11%	87%	81.8	0%	4%	59%	6/14/22	259	101,453
Eastern Asia	Taiwan	45%	41%	14%	39.5	10%	0%	0%	0%					5/31/21	375	192,617
Western Asia	Jordan	#DIV/0!	0%	0%	34.7	2%	11%	38%	51%	68.2			59%	12/28/21	1,352	164,716
Oceania	New Zealand	#DIV/0!	0%	0%	30.8	11%	5%	15%	7%	75.5				6/21/22	442	324,247

# Monthly share of elderly in new cases

Solidarity Covid - Expats in China		share of 70Y+ in the new cases							avg age of cases				
area	country	202111	202112	202201	202202	202203	202204	202205	202206	demographics data updat	2021	Q1 2022	Q2 2022
SouthEastern Asi	Brunei									NA	0.0	0.0	0.0
Western Asia	Qatar									NA	0.0	0.0	0.0
Western Asia	UAE									NA	0.0	0.0	0.0
Eastern Asia	Taiwan									5/31/21	39.5	0.0	0.0
SouthEastern Asi	Cambodia									3/25/21	34.0	0.0	0.0
Southern Asia	Bhutan									NA	0.0	0.0	0.0
Eastern Asia	S. Korea									NA	0.0	0.0	0.0
SouthEastern Asi	Singapore									NA	0.0	0.0	0.0
SouthEastern Asi	Vietnam									6/6/21	35.9	0.0	0.0
Eastern Asia	Hong Kong	6%	4%	2%						NA	0.0	0.0	0.0
Oceania	New Zealand	2%		3%	2%	3%	5%	7%		6/21/22	30.6	30.3	32.9
Eastern Asia	Japan			8%	9%	7%	5%	6%	7%	6/14/22	0.0	36.4	34.4
Oceania	Australia	5%	7%	4%	6%	4%	7%			4/12/22	34.7	34.0	35.1
Eastern Asia	Macao									NA	0.0	0.0	0.0
SouthEastern Asi	Malaysia									NA	0.0	0.0	0.0
Western Asia	Israel									4/18/21	31.7	0.0	0.0
Western Asia	Bahrain									NA	0.0	0.0	0.0
SouthEastern Asi	Thailand									6/28/21	35.6	0.0	0.0
Western Asia	Saudi Arabia									NA	0.0	0.0	0.0
Western Asia	Kuwait									NA	0.0	0.0	0.0
Southern Asia	Sri Lanka									NA	0.0	0.0	0.0
Southern Asia	Nepal									1/26/21	29.8	0.0	0.0
Western Asia	Iran									NA	0.0	0.0	0.0
Western Asia	Turkey									10/26/20	0.0	0.0	0.0
Southern Asia	Maldives	4%								11/9/21	31.6	0.0	0.0
Southern Asia	Bangladesh			3%						1/17/22	36.4	36.4	0.0
Southern Asia	Uzbekistan									NA	0.0	0.0	0.0
Oceania	Fiji									NA	0.0	0.0	0.0
Eastern Asia	Mongolia									NA	0.0	0.0	0.0
Oceania	French Polynesia									NA	0.0	0.0	0.0
SouthEastern Asi	Indonesia	9%	5%	4%	4%	3%	7%			4/10/22	38.2	37.8	37.3
SouthEastern Asi	Laos									NA	0.0	0.0	0.0
Southern Asia	India									10/2/20	0.0	0.0	0.0
SouthEastern Asi	Philippines	9%	8%	4%	8%	9%	8%	8%	6%	6/11/22	38.7	38.3	38.3
Western Asia	Oman									NA	0.0	0.0	0.0
Western Asia	Azerbaijan									NA	0.0	0.0	0.0
Southern Asia	Pakistan									6/2/20	0.0	0.0	0.0
SouthEastern Asi	Myanmar									NA	0.0	0.0	0.0
Southern Asia	Kazakhstan									6/1/21	35.5	0.0	0.0
Western Asia	Jordan	3%								12/28/21	34.7	0.0	0.0
Western Asia	Lebanon									6/23/21	41.3	0.0	0.0
Western Asia	Palestine		5%		3%					2/4/22	34.5	34.5	0.0
Western Asia	Georgia									NA	0.0	0.0	0.0
Western Asia	Armenia									NA	0.0	0.0	0.0
Southern Asia	Kyrgyzstan									9/26/20	0.0	0.0	0.0
Western Asia	Iraq									5/24/20	0.0	0.0	0.0
Oceania	Kiribati									NA	0.0	0.0	0.0
Western Asia	Syria									NA	0.0	0.0	0.0
Southern Asia	Afghanistan	3%			6%	8%	5%	7%		5/12/22	40.6	40.4	40.5
SouthEastern Asi	Papua New Guinea									3/14/21	38.9	0.0	0.0

# Evolution of lethality rate through variants on 70 Y + population

High bias of the testing level

70 Year + Lethality rate on 3 months rolling total													avg age of deaths		
countries ranked on share of elderly in total cases															
source COVERAGE-DB + extra input (France, Hong Kong, Brazil)															
	202012	202103	202106	202109	202112	202201	202202	202203	202204	202205	202206	2021	Q1 2022	Q2 2022	
Eastern / Taiwan	0.0%	0.0%	0.0%	0.0%	0.0%	0.0%	0.0%	0.0%	0.0%	0.0%	0.0%	0.0	0.0	0.0	
Eastern / Japan	0.0%	0.0%	0.0%	0.0%	0.0%	8.0%	4.7%	4.6%	2.5%	3.1%	1.8%	0.0	81.8	82.5	
Eastern / Hong Kong locally acquired	11.1%	12.5%	12.5%	0.0%	0.0%	0.0%	0.0%	0.0%	5.3%	5.3%	5.3%	0.0	0.0	0.0	
Eastern / Hong Kong	10.9%	12.3%	1.3%	0.0%	0.0%	0.0%	0.0%	0.0%	0.0%	0.0%	0.0%	0.0	0.0	0.0	
Eastern / South Korea	8.3%	15.2%	5.9%	4.1%	6.2%	7.4%	2.5%	7.3%	11.8%	0.0%	0.0%	78.3	79.0	80.2	
Western / Lebanon	0.0%	0.0%	0.0%	0.0%	0.0%	0.0%	0.0%	0.0%	0.0%	0.0%	0.0%	0.0	0.0	0.0	
SouthEas / Singapore locally acquired	0.0%	0.0%	1.9%	0.0%	0.0%	0.0%	0.0%	0.0%	0.0%	0.0%	0.0%	0.0	0.0	0.0	
Western / Turkey	37.5%	0.0%	0.0%	0.0%	0.0%	0.0%	0.0%	0.0%	0.0%	0.0%	0.0%	0.0	0.0	0.0	
Southern / Afghanistan	12.5%	0.0%	0.0%	13.7%	14.9%	22.2%	15.6%	15.0%	14.9%	4.5%	4.4%	62.2	62.6	62.2	
Southern / Pakistan	0.0%	0.0%	0.0%	0.0%	0.0%	0.0%	0.0%	0.0%	0.0%	0.0%	0.0%	0.0	0.0	0.0	
Western / Iraq	0.0%	0.0%	0.0%	0.0%	0.0%	0.0%	0.0%	0.0%	0.0%	0.0%	0.0%	0.0	0.0	0.0	
SouthEas / Philippines	16.7%	8.0%	10.9%	8.5%	14.5%	61.7%	57.8%	57.2%	10.9%	10.6%	5.9%	63.1	62.8	62.7	
SouthEas / Indonesia	13.0%	18.2%	12.2%	16.5%	19.7%	3.6%	1.7%	5.2%	6.4%	10.9%	13.7%	59.1	59.1	59.2	
Southern / India	9.2%	0.0%	0.0%	0.0%	0.0%	0.0%	0.0%	0.0%	0.0%	0.0%	0.0%	0.0	0.0	0.0	
SouthEas / Papua New Guinea	0.0%	0.0%	0.0%	0.0%	0.0%	0.0%	0.0%	0.0%	0.0%	0.0%	0.0%	0.0	0.0	0.0	
Oceania / Australia	100.0%	9.0%	3.9%	8.8%	8.6%	1.8%	2.7%	3.0%	3.9%	2.9%	2.0%	81.3	81.0	81.3	
Western / Palestine	0.0%	0.0%	0.0%	0.0%	0.0%	0.0%	0.0%	0.0%	0.0%	0.0%	0.0%	0.0	0.0	0.0	
Southern / Kyrgyzstan	0.0%	0.0%	0.0%	0.0%	0.0%	0.0%	0.0%	0.0%	0.0%	0.0%	0.0%	0.0	0.0	0.0	
Western / Israel	23.1%	27.1%	9.6%	0.0%	0.0%	0.0%	0.0%	0.0%	0.0%	0.0%	0.0%	79.7	0.0	0.0	
Southern / Kazakhstan	0.0%	0.0%	0.0%	0.0%	0.0%	0.0%	0.0%	0.0%	0.0%	0.0%	0.0%	0.0	0.0	0.0	
Southern / Bangladesh	10.6%	10.6%	11.2%	0.0%	0.0%	14.0%	14.0%	14.0%	0.0%	0.0%	0.0%	56.9	56.9	0.0	
SouthEas / Thailand	0.0%	0.0%	0.0%	0.0%	0.0%	0.0%	0.0%	0.0%	0.0%	0.0%	0.0%	0.0	0.0	0.0	
Eastern / Hong Kong imported	25.0%	0.0%	0.0%	0.0%	0.0%	0.0%	0.0%	0.0%	0.0%	0.0%	0.0%	0.0	0.0	0.0	
SouthEas / Vietnam	0.0%	0.0%	0.0%	0.0%	0.0%	0.0%	0.0%	0.0%	0.0%	0.0%	0.0%	0.0	0.0	0.0	
Southern / Maldives	0.0%	0.0%	0.0%	0.0%	0.0%	0.0%	0.0%	0.0%	0.0%	0.0%	0.0%	0.0	0.0	0.0	
SouthEas / Cambodia	0.0%	0.0%	0.0%	0.0%	0.0%	0.0%	0.0%	0.0%	0.0%	0.0%	0.0%	0.0	0.0	0.0	
Southern / Nepal	55.8%	0.0%	0.0%	0.0%	0.0%	0.0%	0.0%	0.0%	0.0%	0.0%	0.0%	62.1	0.0	0.0	
Western / Jordan	0.0%	15.7%	27.2%	20.0%	30.2%	36.1%	0.0%	0.0%	0.0%	0.0%	0.0%	68.2	0.0	0.0	
Oceania / New Zealand	0.0%	29.5%	13.4%	66.7%	5.9%	1.9%	0.1%	1.1%	1.6%	1.8%	2.7%	74.7	73.4	79.3	

# In Latam, deaths are usually high and high toll on 50-70 age group

Brazil census data set of Hospitalized C+ patients processed with the precious support of **ARTEFACT**

## Latin America

Sociology of Covid + cases by country - ranked on Share of <50 Y in cases		share in C+ cases by age group			avg age cases	sources :	INED - COVERAGE-DB + desk research				8/1/2022					
Area	Country	<50	50-70	70+		United Nations share of 70+ in demographics - source UN	share in Deaths by age group			avg age Deaths	Lethality		share of males in deaths	COVERAGE data updated	nb deaths 1M Pop	nb cases 1M Pop
							<50	50-70	70+		Lethality of 50-70	Lethality of 70+				
Central America	Costa Rica	85%	12%	3%		7%	22%	24%	54%		3%	24%		11/10/20	1,680	193,655
South America	Venezuela	80%	17%	3%	35.0	5%	0%	0%	0%					6/5/21	204	18,964
Central America	Guatemala	77%	19%	4%		3%	0%	0%	0%					8/24/20	1,024	56,040
South America	Uruguay	76%	17%	6%	36.8	11%	8%	30%	62%	74.4	3%	15%	54%	11/21/21	2,119	277,736
Central America	Panama	75%	19%	5%		6%	16%	35%	50%		3%	18%	66%	7/4/20	1,891	214,180
South America	Paraguay	73%	21%	6%	40.1	4%	16%	43%	41%	65.5	7%	25%	57%	12/9/21	2,628	96,671
South America	Argentina	73%	20%	6%	40.4	8%	9%	33%	59%	71.4	2%	13%	57%	6/5/22	2,809	207,573
South America	Chile	72%	21%	6%	38.7	8%	0%	0%	0%	73.0				6/17/22	3,064	218,328
South America	Colombia	72%	22%	7%	40.1	6%	12%	37%	51%	68.7	4%	17%	61%	6/15/22	2,708	120,473
Caribbean	Dominican Republic	72%	0%	0%		5%	0%	0%	0%		3%	15%	100%	8/17/20	396	56,858
Central America	Honduras	71%	18%	5%	38.6	3%	0%	0%	0%					3/22/22	1,068	42,993
Central America	Mexico	70%	24%	7%	41.8	5%	18%	48%	35%	63.4	15%	39%	62%	10/26/21	2,488	51,300
Central America	El Salvador	69%	24%	7%	42.7	6%	0%	0%	0%					4/12/22	641	29,114
South America	Peru	68%	22%	7%	41.9	6%	14%	42%	45%	66.7	11%	41%	63%	6/18/22	6,319	115,382
Caribbean	Bermuda	66%	27%	7%	43.4		0%	0%	0%					8/6/21	2,330	278,204
South America	Bolivia	66%	23%	11%		5%	27%	35%	38%		9%	19%	67%	4/22/20	1,838	86,430
Caribbean	Jamaica	66%	23%	10%	41.5	6%	18%	36%	46%	68.0	3%	10%		3/9/22	1,069	49,018
South America	Ecuador	64%	26%	10%		5%	12%	44%	43%		23%	61%	66%	7/31/20	1,967	52,822
Central America	Nicaragua	50%	33%	17%		3%	16%	47%	38%		32%	49%		10/20/20	33	2,724
South America	Brazil Hospital	29%	39%	32%		6%	11%	36%	53%		30%	53%		11/29/21	3,147	156,963
South America	Suriname	#DIV/0!	0%	0%		5%	15%	38%	47%					8/18/20	2,309	135,495
Caribbean	Haiti	#DIV/0!	0%	0%	42.3	3%	23%	39%	38%	61.1				8/10/21	72	2,760
Caribbean	Cuba	#DIV/0!	0%	0%		11%	6%	31%	63%					5/24/20	754	97,965



# Monthly share of elderly in new cases

## Latin America

Solidarity Covid - Expats in China		share of 70Y+ in the new cases									avg age of cases			
area	country	202111	202112	202201	202202	202203	202204	202205	202206	demographics data update	2021	Q1 2022	Q2 2022	
Caribbean	Cuba									5/24/20	0.0	0.0	0.0	
South America	Chile		6%	5%	7%				6%	6/17/22	39.0	38.6	38.1	
South America	Uruguay	7%								11/21/21	36.7	0.0	0.0	
South America	Peru	7%	6%	4%	7%	6%	6%	7%	7%	6/18/22	42.3	40.9	40.9	
South America	Argentina	5%	4%	5%	9%	6%	9%	9%	9%	6/5/22	40.5	40.1	40.1	
Central America	Costa Rica									11/10/20	0.0	0.0	0.0	
South America	Brazil									6/16/22	0.0	0.0	0.0	
South America	Ecuador									7/31/20	0.0	0.0	0.0	
Central America	Panama									7/4/20	0.0	0.0	0.0	
Central America	Nicaragua									10/20/20	0.0	0.0	0.0	
Central America	El Salvador	9%	11%	4%	6%	10%	12%			4/12/22	42.7	42.8	43.0	
Caribbean	Réunion									NA	0.0	0.0	0.0	
South America	Colombia	8%	7%	8%	13%	12%	12%	12%	12%	6/15/22	40.0	40.2	40.3	
Central America	Mexico									10/26/21	41.8	0.0	0.0	
Caribbean	Aruba									NA	0.0	0.0	0.0	
Central America	Honduras					7%				3/22/22	40.4	37.7	0.0	
Caribbean	Dominican Rep									8/17/20	0.0	0.0	0.0	
South America	Venezuela									6/5/21	35.0	0.0	0.0	
South America	Guyana									NA	0.0	0.0	0.0	
South America	Paraguay									12/9/21	40.1	0.0	0.0	
Caribbean	Antigua and Barbuda									NA	0.0	0.0	0.0	
South America	Bolivia									4/22/20	0.0	0.0	0.0	
Caribbean	Trinidad and Tobago									NA	0.0	0.0	0.0	
Caribbean	Barbados									NA	0.0	0.0	0.0	
Caribbean	Martinique									NA	0.0	0.0	0.0	
Central America	Guatemala									8/24/20	0.0	0.0	0.0	
Caribbean	Guadeloupe									NA	0.0	0.0	0.0	
Caribbean	Bahamas									NA	0.0	0.0	0.0	
South America	Suriname									8/18/20	0.0	0.0	0.0	
Caribbean	Grenada									NA	0.0	0.0	0.0	
Caribbean	Saint Lucia									NA	0.0	0.0	0.0	
Caribbean	Jamaica	14%	5%	8%	19%	18%				3/9/22	41.6	41.1	0.0	
Caribbean	Haiti									8/10/21	42.3	0.0	0.0	
Caribbean	Puerto Rico	6%		7%	10%	8%	8%	10%		6/20/22	39.1	37.7	37.9	
Caribbean	Curaçao									NA	0.0	0.0	0.0	
South America	Falkland Islands									NA	0.0	0.0	0.0	
Caribbean	British Virgin Islands									NA	0.0	0.0	0.0	
Caribbean	St. Barth									NA	0.0	0.0	0.0	
Caribbean	Bermuda									8/6/21	43.4	0.0	0.0	
Caribbean	Turks and Caicos									NA	0.0	0.0	0.0	
Caribbean	Cayman Islands									NA	0.0	0.0	0.0	
Caribbean	Dominica									NA	0.0	0.0	0.0	
Caribbean	St. Vincent and the Grenadines									NA	0.0	0.0	0.0	
Caribbean	Montserrat									NA	0.0	0.0	0.0	
Caribbean	Saint Kitts and Nevis									NA	0.0	0.0	0.0	
Caribbean	Anguilla									NA	0.0	0.0	0.0	

# Evolution of lethality rate through variants on 70 Y + population

Latin America

High bias of the testing level

countries ranked on share of elderly in total cases													avg age of deaths		
70 Year + Lethality rate on 3 months rolling total													source COVERAGE-DB + extra input (France, Hong Kong, Brazil)		
	202102	202103	202106	202109	202112	202201	202202	202203	202204	202205	202206	2021	Q1 2022	Q2 2022	
South Am Brazil Hospital	45.5%	56.1%	67.7%	67.5%	53.4%	0.0%	0.0%	0.0%	0.0%	0.0%	0.0%	0.0	0.0	0.0	
Central A Nicaragua	43.8%	0.0%	0.0%	0.0%	0.0%	0.0%	0.0%	0.0%	0.0%	0.0%	0.0%	0.0	0.0	0.0	
South Am Ecuador	0.0%	0.0%	0.0%	0.0%	0.0%	0.0%	0.0%	0.0%	0.0%	0.0%	0.0%	0.0	0.0	0.0	
Caribbea Jamaica	19.3%	5.0%	18.9%	9.9%	24.7%	5.5%	3.7%	3.8%	9.0%	30.1%	0.0%	68.4	66.6	0.0	
South Am Bolivia	0.0%	0.0%	0.0%	0.0%	0.0%	0.0%	0.0%	0.0%	0.0%	0.0%	0.0%	0.0	0.0	0.0	
Caribbea Bermuda	0.0%	0.0%	0.0%	0.0%	0.0%	0.0%	0.0%	0.0%	0.0%	0.0%	0.0%	0.0	0.0	0.0	
South Am Peru	39.3%	50.6%	56.4%	52.0%	26.0%	7.8%	9.3%	9.8%	20.7%	41.4%	20.7%	66.7	67.0	67.0	
Central A El Salvador	0.0%	0.0%	0.0%	0.0%	0.0%	0.0%	0.0%	0.0%	0.0%	0.0%	0.0%	0.0	0.0	0.0	
Central A Mexico	35.6%	45.4%	40.2%	25.6%	41.3%	0.0%	0.0%	0.0%	0.0%	0.0%	0.0%	63.5	0.0	0.0	
Central A Honduras	0.0%	0.0%	36.9%	0.0%	0.0%	0.0%	0.0%	0.0%	0.0%	0.0%	0.0%	0.0	0.0	0.0	
Caribbea Dominican Republic	0.0%	0.0%	0.0%	0.0%	0.0%	0.0%	0.0%	0.0%	0.0%	0.0%	0.0%	0.0	0.0	0.0	
South Am Colombia	16.9%	19.1%	18.5%	21.4%	15.5%	7.5%	9.1%	9.0%	19.6%	11.5%	2.6%	68.6	69.2	69.3	
South Am Chile	5.4%	0.0%	5.2%	0.0%	0.5%	16.3%	12.4%	34.9%	7.6%	0.0%	0.3%	73.0	73.4	73.8	
South Am Argentina	21.1%	16.1%	16.8%	18.4%	6.6%	3.8%	4.5%	4.6%	8.7%	3.1%	1.5%	71.4	72.2	72.2	
South Am Paraguay	0.0%	20.7%	20.8%	43.6%	0.0%	0.0%	0.0%	0.0%	0.0%	0.0%	0.0%	65.6	0.0	0.0	
Central A Panama	0.0%	0.0%	0.0%	0.0%	0.0%	0.0%	0.0%	0.0%	0.0%	0.0%	0.0%	0.0	0.0	0.0	
South Am Uruguay	6.5%	10.4%	16.6%	18.2%	7.1%	7.3%	0.0%	0.0%	0.0%	0.0%	0.0%	74.5	0.0	0.0	
Central A Guatemala	0.0%	0.0%	0.0%	0.0%	0.0%	0.0%	0.0%	0.0%	0.0%	0.0%	0.0%	0.0	0.0	0.0	
South Am Venezuela	0.0%	0.0%	0.0%	0.0%	0.0%	0.0%	0.0%	0.0%	0.0%	0.0%	0.0%	0.0	0.0	0.0	
Central A Costa Rica	26.0%	0.0%	0.0%	0.0%	0.0%	0.0%	0.0%	0.0%	0.0%	0.0%	0.0%	0.0	0.0	0.0	
South Am Brazil	0.0%	0.0%	0.0%	0.0%	0.0%	0.0%	0.0%	0.0%	0.0%	0.0%	0.0%	67.3	68.3	68.4	
Caribbea Puerto Rico	0.0%	0.0%	0.0%	0.0%	0.0%	7.1%	7.4%	7.2%	39.0%	14.2%	15.1%	0.0	73.2	73.6	
Caribbea Haiti	7.2%	4.1%	0.0%	12.2%	0.0%	0.0%	0.0%	0.0%	0.0%	0.0%	0.0%	61.1	0.0	0.0	
Caribbea Cuba	0.0%	0.0%	0.0%	0.0%	0.0%	0.0%	0.0%	0.0%	0.0%	0.0%	0.0%	0.0	0.0	0.0	
South Am Suriname	0.0%	0.0%	0.0%	0.0%	0.0%	0.0%	0.0%	0.0%	0.0%	0.0%	0.0%	0.0	0.0	0.0	

# Africa is the youngest area in demographics, but high incidence of the disease leads to higher lethality rates

Africa

Sociology of Covid + cases by country - ranked on Share of <50 Y in cases						sources :	INED - COVerAGE-DB + desk research						8/1/2022				
Carole Gabay		share in C+ cases by age group				avg age cases	United Nations share of 70+ in demographics - source UN	share in Deaths by age group				Lethality		share of males in deaths	COVerAGE data updated	Worldometer	
Area	Country	<50	50-70	70+	<50			50-70	70+	avg age Deaths	Lethality of 50-70	Lethality of 70+	nb deaths 1M Pop			nb cases 1M Pop	
Southern Asia	Nepal	93%	6%	1%	29.8	4%	24%	39%	37%	62.3	8%	86%	70%	1/26/21	396	32,662	
SouthEastern Asia	Cambodia	89%	9%	2%	34.1	3%	0%	0%	0%					3/25/21	178	7,955	
Southern Asia	Maldives	86%	12%	2%	31.6	2%	0%	0%	0%					11/9/21	548	329,244	
SouthEastern Asia	Vietnam	84%	14%	2%	35.9	5%	0%	0%	0%					6/6/21	435	108,725	
SouthEastern Asia	Thailand	83%	15%	2%	35.5	8%	0%	0%	0%					6/28/21	448	65,451	
Southern Asia	Bangladesh	82%	15%	3%	36.4	4%	31%	48%	21%	56.9	6%	12%		1/17/22	174	11,931	
Southern Asia	Kazakhstan	81%	16%	3%	35.0	5%	0%	0%	0%					6/1/21	710	70,289	
Western Asia	Israel	81%	14%	5%	31.7	8%	3%	21%	76%	79.5	1%	12%	57%	4/18/21	1,221	491,700	
Southern Asia	Kyrgyzstan	79%	14%	7%		3%	0%	0%	0%					9/26/20	443	29,836	
Western Asia	Palestine	78%	16%	4%	34.5	2%	0%	0%	0%					2/4/22	1,004	111,824	
Oceania	Australia	78%	17%	5%	35.0	11%	3%	14%	82%	80.7	0%	5%	58%	4/12/22	454	361,508	
SouthEastern Asia	Papua New Guinea	77%	22%	2%	39.1	2%	0%	0%	0%					3/14/21	71	4,816	
Southern Asia	India	75%	21%	4%		4%	21%	52%	27%		4%	11%	69%	10/2/20	374	31,281	
SouthEastern Asia	Indonesia	74%	20%	4%	38.1	4%	24%	53%	23%	59.1	7%	13%		4/10/22	562	22,218	
SouthEastern Asia	Philippines	73%	20%	6%	38.6	3%	0%	0%	0%	63.0				6/11/22	539	33,568	
Western Asia	Iraq	73%	22%	5%		2%	21%	50%	29%		8%	20%	69%	5/24/20	601	58,099	
Southern Asia	Pakistan	73%	23%	4%		3%	21%	55%	24%		5%	12%	74%	6/2/20	133	6,768	
Southern Asia	Afghanistan	71%	22%	7%	40.5	2%	19%	50%	31%	62.3	7%	13%		5/12/22	190	4,563	
Western Asia	Turkey	70%	23%	7%		6%	6%	36%	58%		8%	44%	62%	10/26/20	1,152	184,279	
SouthEastern Asia	Singapore locally a	67%	21%	12%		7%	0%	25%	75%		0%	2%		6/28/21	253	289,065	
Western Asia	Lebanon	67%	25%	8%	41.3	5%	0%	0%	0%					6/23/21	1,558	173,842	
Eastern Asia	South Korea	62%	0%	0%	41.1	11%	2%	16%	82%	78.8				6/22/22	488	388,086	
Eastern Asia	Hong Kong locally a	53%	32%	12%		12%	1%	11%	88%		0%	5%		7/27/22	1,247	178,169	
Eastern Asia	Japan	52%	15%	7%	35.4	22%	2%	11%	87%	81.8	0%	4%	59%	6/14/22	259	101,453	
Eastern Asia	Taiwan	45%	41%	14%	39.5	10%	0%	0%	0%					5/31/21	375	192,617	
Western Asia	Jordan	#DIV/0!	0%	0%	34.7	2%	11%	38%	51%	68.2			59%	12/28/21	1,352	164,716	
Oceania	New Zealand	#DIV/0!	0%	0%	30.8	11%	5%	15%	79%	75.5				6/21/22	442	324,247	

# Monthly share of elderly in new cases

Solidarity Covid - Expats in China		share of 70Y+ in the new cases								avg age of cases			
area	country	202111	202112	202201	202202	202203	202204	202205	202206	demographics data update	2021	Q1 2022	Q2 2022
Southern Africa	Seychelles									NA	0.0	0.0	0.0
Southern Africa	Mauritius									NA	0.0	0.0	0.0
Eastern Africa	Rwanda									10/27/21	36.1	0.0	0.0
Southern Africa	New Caledonia									NA	0.0	0.0	0.0
North Africa	Morocco									NA	0.0	0.0	0.0
North Africa	Tunisia									11/3/20	0.0	0.0	0.0
Southern Africa	Botswana									6/17/20	0.0	0.0	0.0
Western Africa	Sao Tome and P									NA	0.0	0.0	0.0
Southern Africa	Mozambique									9/30/21	35.6	0.0	0.0
North Africa	Egypt									NA	0.0	0.0	0.0
Southern Africa	Zimbabwe									NA	0.0	0.0	0.0
Southern Africa	Comoros									NA	0.0	0.0	0.0
Eastern Africa	Angola									6/15/20	0.0	0.0	0.0
Western Africa	Ghana									NA	0.0	0.0	0.0
Southern Africa	South Africa		6%	6%						2/19/22	41.5	40.4	0.0
Western Africa	Mauritania									5/24/20	0.0	0.0	0.0
Southern Africa	Eswatini									4/18/21	39.5	0.0	0.0
Western Africa	Liberia									NA	0.0	0.0	0.0
North Africa	Libya									NA	0.0	0.0	0.0
Eastern Africa	Uganda									7/26/20	0.0	0.0	0.0
Southern Africa	Lesotho									NA	0.0	0.0	0.0
Western Africa	Guinea									1/14/21	36.8	0.0	0.0
Eastern Africa	Ethiopia									5/9/20	0.0	0.0	0.0
Western Africa	Sierra Leone									9/28/20	0.0	0.0	0.0
Eastern Africa	Zambia									6/21/20	0.0	0.0	0.0
Western Africa	Togo	4%	2%	2%	4%					6/21/22	37.5	37.3	37.3
Western Africa	Equatorial Guir		3%	2%	4%	2%	-3%	6%	1%	6/17/22	36.8	35.9	36.0
Eastern Africa	Kenya									8/31/20	0.0	0.0	0.0
Western Africa	Gambia									10/3/21	38.7	0.0	0.0
Southern Africa	Namibia									10/15/20	0.0	0.0	0.0
Western Africa	Benin									5/22/20	0.0	0.0	0.0
Western Africa	Guinea-Bissau									NA	0.0	0.0	0.0
Eastern Africa	CAR									NA	0.0	0.0	0.0
Western Africa	Nigeria		4%	2%	2%	3%	6%			6/5/22	37.9	38.2	38.2
Western Africa	Gabon									NA	0.0	0.0	0.0
Eastern Africa	Tanzania									NA	0.0	0.0	0.0
Eastern Africa	Djibouti									NA	0.0	0.0	0.0
Eastern Africa	Somalia	5%	5%	5%	5%	5%	5%	5%		5/19/22	38.6	38.6	38.6
Eastern Africa	Sudan									5/18/20	0.0	0.0	0.0
Western Africa	Niger									NA	0.0	0.0	0.0
North Africa	Algeria									10/23/20	0.0	0.0	0.0
Southern Africa	Malawi									12/27/20	0.0	0.0	0.0
Eastern Africa	Congo									NA	0.0	0.0	0.0
Western Africa	Senegal									4/10/20	0.0	0.0	0.0
Western Africa	Burkina Faso									6/30/20	0.0	0.0	0.0
Eastern Africa	Chad									10/21/20	0.0	0.0	0.0
Western Africa	Mali									8/24/20	0.0	0.0	0.0
Eastern Africa	South Sudan									NA	0.0	0.0	0.0
Southern Africa	Madagascar									NA	0.0	0.0	0.0
Western Africa	Cameroon									4/16/20	0.0	0.0	0.0

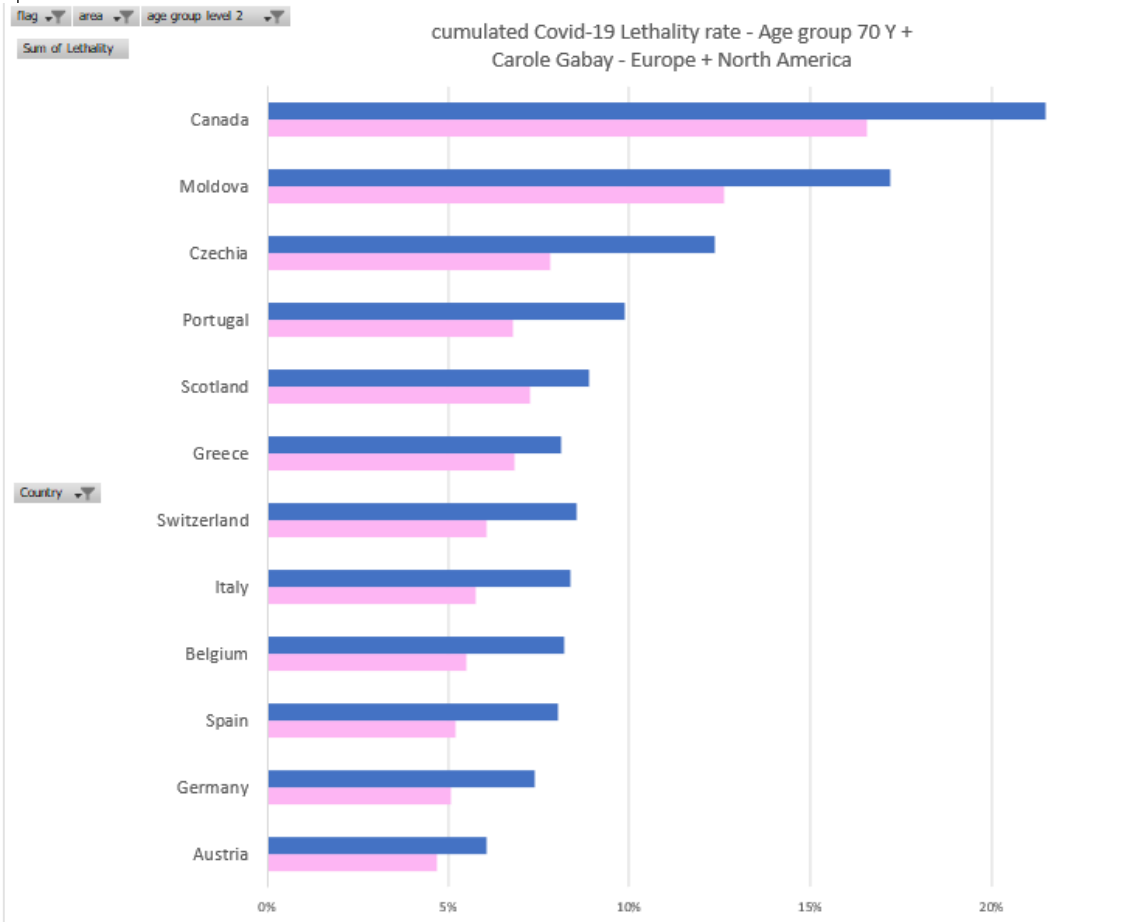
Africa

# Monthly share of elderly in new cases

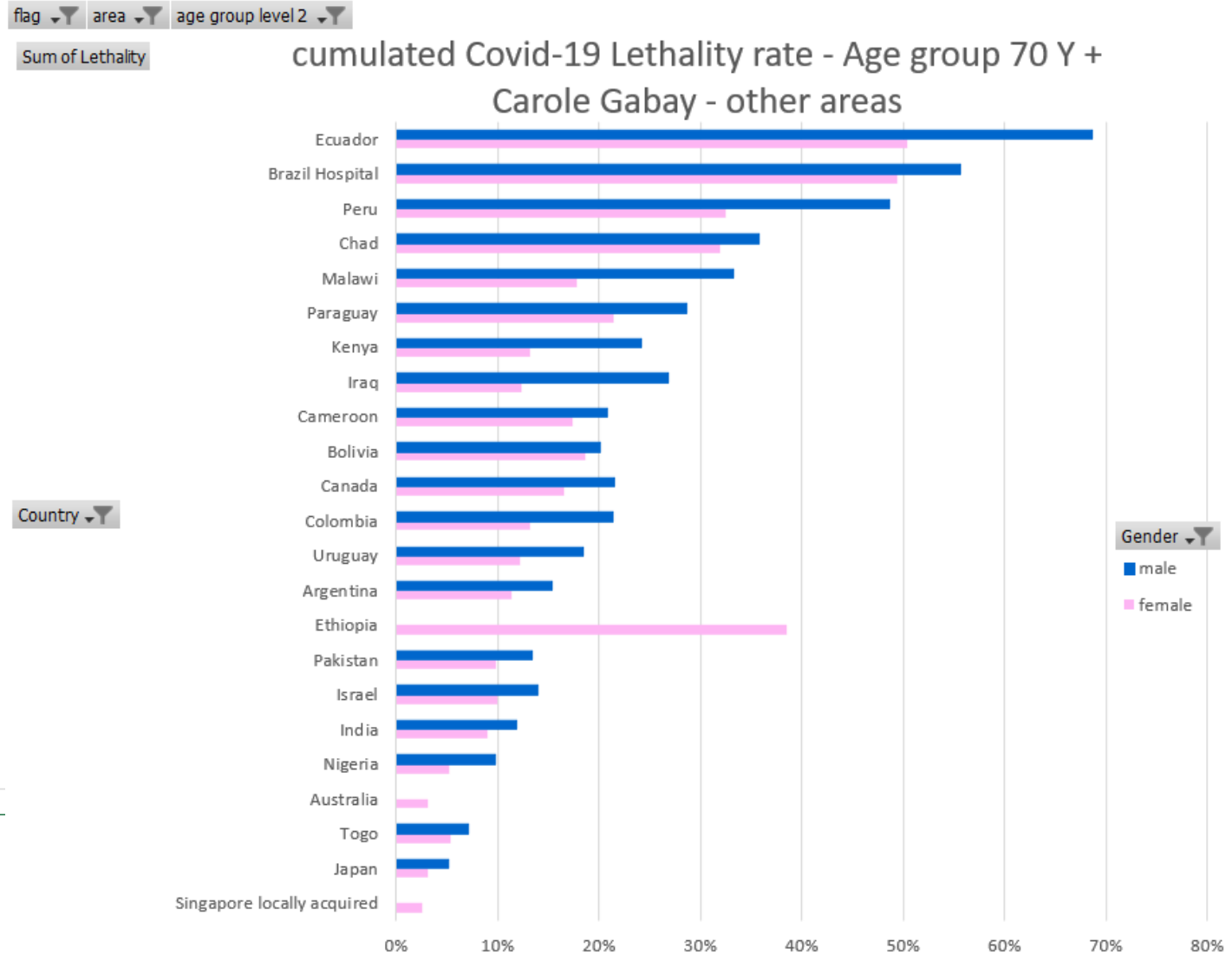
## Africa

		countries ranked on share of elderly in total cases											avg age of deaths		
<b>70 Year + Lethality rate on 3 months rolling total</b>		source COVerAGE-DB + extra input (France, Hong Kong, Brazil)													
		202012	202103	202106	202109	202112	202201	202202	202203	202204	202205	202206	2021	Q1 2022	Q2 2022
North Afr	Algeria	0.0%	0.0%	0.0%	0.0%	0.0%	0.0%	0.0%	0.0%	0.0%	0.0%	0.0%	0.0	0.0	0.0
Western	Burkina Faso	0.0%	0.0%	0.0%	0.0%	0.0%	0.0%	0.0%	0.0%	0.0%	0.0%	0.0%	0.0	0.0	0.0
Western	Mali	0.0%	0.0%	0.0%	0.0%	0.0%	0.0%	0.0%	0.0%	0.0%	0.0%	0.0%	0.0	0.0	0.0
North Afr	Tunisia	0.0%	0.0%	0.0%	0.0%	0.0%	0.0%	0.0%	0.0%	0.0%	0.0%	0.0%	0.0	0.0	0.0
Southern	South Africa	0.0%	0.0%	0.0%	0.0%	0.0%	0.0%	0.0%	0.0%	0.0%	0.0%	0.0%	0.0	0.0	0.0
Western	Mauritania	0.0%	0.0%	0.0%	0.0%	0.0%	0.0%	0.0%	0.0%	0.0%	0.0%	0.0%	0.0	0.0	0.0
Eastern A	Chad	35.0%	0.0%	0.0%	0.0%	0.0%	0.0%	0.0%	0.0%	0.0%	0.0%	0.0%	0.0	0.0	0.0
Western	Cameroon	0.0%	0.0%	0.0%	0.0%	0.0%	0.0%	0.0%	0.0%	0.0%	0.0%	0.0%	0.0	0.0	0.0
Western	Gambia	0.0%	0.0%	0.0%	0.0%	0.0%	0.0%	0.0%	0.0%	0.0%	0.0%	0.0%	0.0	0.0	0.0
Southern	Eswatini	2.6%	0.0%	0.0%	0.0%	0.0%	0.0%	0.0%	0.0%	0.0%	0.0%	0.0%	0.0	0.0	0.0
Western	Togo	12.1%	6.5%	2.2%	5.1%	13.5%	3.4%	4.2%	4.2%	14.1%	0.0%	0.0%	57.8	58.5	58.5
Eastern A	Somalia	34.9%	71.2%	84.0%	74.2%	72.8%	53.3%	14.0%	12.1%	17.4%	21.5%	17.7%	74.4	73.5	73.5
Eastern A	Sudan	0.0%	0.0%	0.0%	0.0%	0.0%	0.0%	0.0%	0.0%	0.0%	0.0%	0.0%	0.0	0.0	0.0
Western	Nigeria	14.1%	6.3%	10.9%	0.0%	0.0%	5.7%	5.7%	5.8%	9.0%	8.7%	2.1%	60.3	62.1	62.1
Eastern A	Rwanda	0.0%	20.3%	7.0%	11.0%	18.7%	0.0%	0.0%	0.0%	0.0%	0.0%	0.0%	63.4	0.0	0.0
Western	Guinea	0.0%	0.0%	0.0%	0.0%	0.0%	0.0%	0.0%	0.0%	0.0%	0.0%	0.0%	0.0	0.0	0.0
Western	Equatorial Guinea	0.0%	0.0%	0.0%	0.0%	0.0%	0.0%	0.0%	0.0%	0.0%	0.0%	0.0%	0.0	0.0	0.0
Southern	Mozambique	0.0%	0.0%	0.0%	0.0%	0.0%	0.0%	0.0%	0.0%	0.0%	0.0%	0.0%	0.0	0.0	0.0
Western	Sierra Leone	0.0%	0.0%	0.0%	0.0%	0.0%	0.0%	0.0%	0.0%	0.0%	0.0%	0.0%	0.0	0.0	0.0
Western	Senegal	0.0%	0.0%	0.0%	0.0%	0.0%	0.0%	0.0%	0.0%	0.0%	0.0%	0.0%	0.0	0.0	0.0
Eastern A	Kenya	0.0%	0.0%	0.0%	0.0%	0.0%	0.0%	0.0%	0.0%	0.0%	0.0%	0.0%	0.0	0.0	0.0
Southern	Botswana	0.0%	0.0%	0.0%	0.0%	0.0%	0.0%	0.0%	0.0%	0.0%	0.0%	0.0%	0.0	0.0	0.0
Eastern A	Ethiopia	0.0%	0.0%	0.0%	0.0%	0.0%	0.0%	0.0%	0.0%	0.0%	0.0%	0.0%	0.0	0.0	0.0
Western	Benin	0.0%	0.0%	0.0%	0.0%	0.0%	0.0%	0.0%	0.0%	0.0%	0.0%	0.0%	0.0	0.0	0.0
Southern	Malawi	22.2%	0.0%	0.0%	0.0%	0.0%	0.0%	0.0%	0.0%	0.0%	0.0%	0.0%	0.0	0.0	0.0
Southern	Namibia	0.0%	0.0%	0.0%	0.0%	0.0%	0.0%	0.0%	0.0%	0.0%	0.0%	0.0%	0.0	0.0	0.0
Eastern A	Zambia	0.0%	0.0%	0.0%	0.0%	0.0%	0.0%	0.0%	0.0%	0.0%	0.0%	0.0%	0.0	0.0	0.0
Eastern A	Angola	0.0%	0.0%	0.0%	0.0%	0.0%	0.0%	0.0%	0.0%	0.0%	0.0%	0.0%	0.0	0.0	0.0
Western	Burundi	0.0%	0.0%	0.0%	0.0%	0.0%	0.0%	0.0%	0.0%	0.0%	0.0%	0.0%	0.0	0.0	0.0
Eastern A	Uganda	0.0%	0.0%	0.0%	0.0%	0.0%	0.0%	0.0%	0.0%	0.0%	0.0%	0.0%	0.0	0.0	0.0

# Whether Elderly care facilities are included or not, a consistent gender gap in lethality among elderly cases

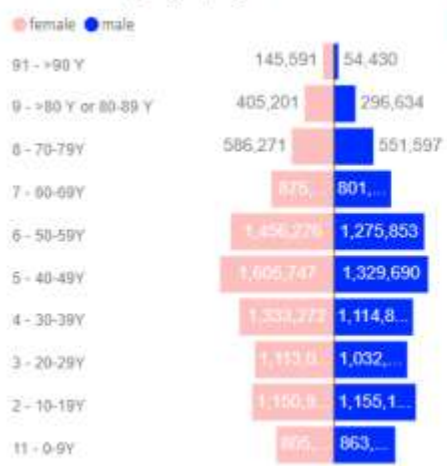


Source : COVerAGE-DB June 23 2022



# Country drill down available on CovidFlow for 109 countries

Covid Cases by age group & gender



Covid Deaths by age group & gender



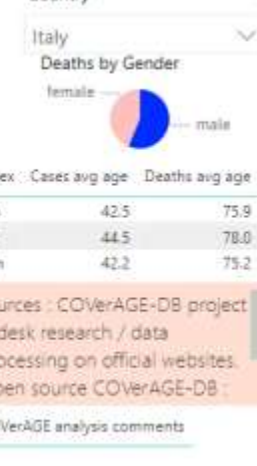
Covid cases by age group



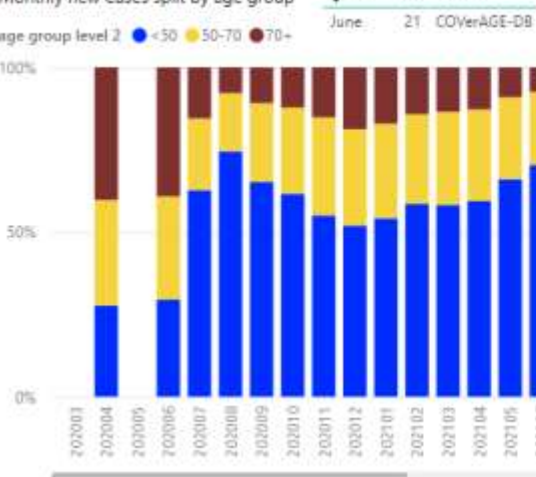
Deaths by age group



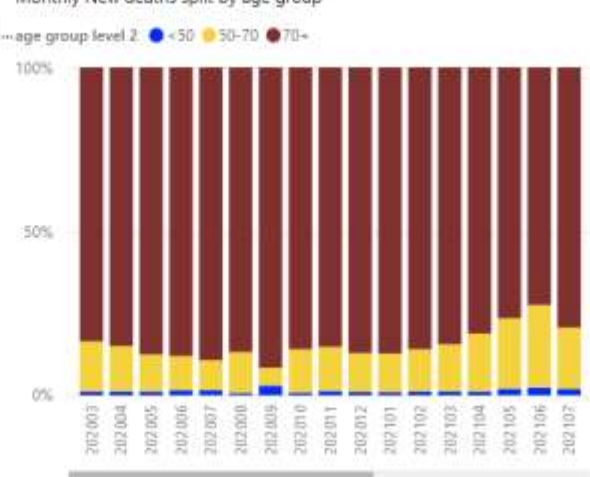
Country: Italy



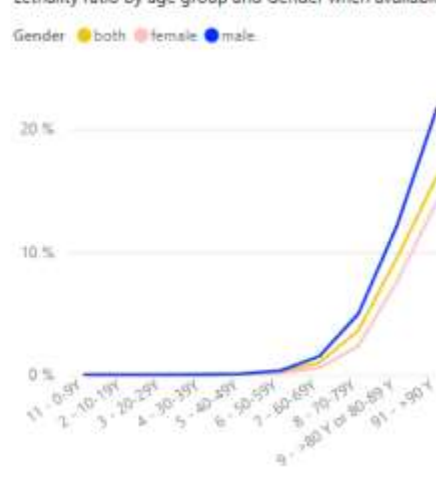
Monthly new Cases split by age group



Monthly New deaths split by age group



Lethality ratio by age group and Gender when available



## Exclusivities appended to COVERAGE-DB data

- France Elderly care facilities early cases and all deaths
- Hong Kong since October 2020, broken down into imported and locally acquired cases
- Brazil Hospital cases thanks to the Opensource file we could process until Dec 15 2021
- Updated every few months

# Soutenez notre travail !



Notre travail est bénévole et gratuit. Il se concentre sur des exclusivités en termes de collecte et traitement d'informations publiques :

- Données Chine détaillées par préfecture / provenance avec historique des cas confirmés, sévères, asymptomatiques
- Profiling des cas par chaîne de transmission (cluster) pour les foyers locaux et provenance des cas importés
- Données monde avec historique des cas sévères, vaccination, tests
- Données démographiques des cas et décès sur 120 pays complétées
- Certaines données sont disponibles en open source avec historique, d'autres exigent un travail quotidien

Ce projet nécessite des heures de travail tous les jours sans interruption, des frais informatiques et de formation

Si vous souhaitez encourager notre travail :

Crowdfunding Yoopay en Chine <https://yooipay.cn/cf/10215>

1. cagnotte Leetchi en France : <https://www.leetchi.com/c/solidarite-covid-wmvdemg5>

- **Solidarité Covid – Français de Chine est finaliste du Trophée des Français de l'Étranger 2022, catégorie Impact Social**
- **Un grand merci à ceux qui ont contribué aux opérations de crowdfunding. une nouvelle operation est ouverte sur le QR code ci-contre**

Solidarité Covid – Français de Chine est depuis le 15 juin 2021 un association loi 1901 enregistrée en France

<https://deeperin19coviddata.wordpress.com/donate/>

Présentation du projet Solidarité Covid – Français de Chine sur notre site Internet, page Welcome :

<https://solidaritecovid.com/wp-content/uploads/2022/05/solidarity-covid-presentation-deck.pdf>

Please Support our work

Solidarité Covid - Français de Chine



Scan with WeChat and share

Until August 22 2022